

INFLUENCES OF
BENGAL

ART BORDER LINE

2007

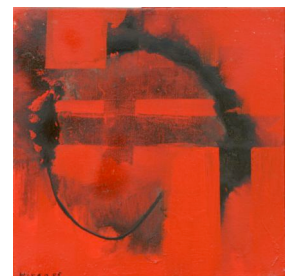
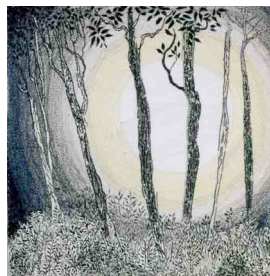
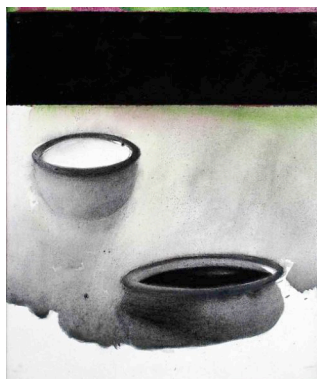
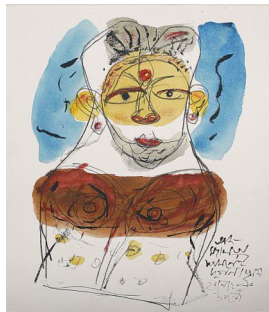
On the occasion of the Brick Lane Festival for the Bengali New Year, Art Border Line would like to share with you the pleasure of exploring influences of contemporary Bengal on the creation these rising Artists.

Beyond the memory of literature, music, language and people, Bengal represents an unforgettable Art of living, a deep and rich landscape of colours, seasons, music, emotions and stories, which remain etched in our minds across time and space. The true multicultural centre in the Indian sub-continent over centuries, Art Border Line is introducing the first of an Annual series of showcasing the diverse spirit and energy of Bengal.

Participating this year :

Anita Mitra
Eric Gourdikian
Madhu Basu
Hiran Mitra

Installation : purpose of Alpana
Diptesh Ghosh Dastidar
Surekha
Tapas Konar



May 14 -20th , 11 - 7pm, Private Viewing : 17th May 6- 9PM
The Gallery in Redchurch Street.
The Factory, 50 Redchurch Street, London E2 7DP
All Images can be viewed on : www.artborderline.com/Influences07/